



## Blackheath Road, London, SE10 8PD

A well-proportioned two bedroom third floor apartment; located a short walk away from Greenwich and Deptford Bridge DLR stations.

The property boasts a well-kept living room with space to dine, a separate modern kitchen with plenty of storage, two generous double bedrooms with one featuring built in storage, and a tidy bathroom.

The apartment is surrounded by local amenities such as local bars, restaurants, cafes, supermarket, museum, and the greenery of Greenwich Park.

- Well-proportioned Two Bedroom Apartment
- Excellent Transport Links
- Close to Local Amenities
- Great Location
- Furnished

**Alex & Matteo**  
ESTATE AGENTS

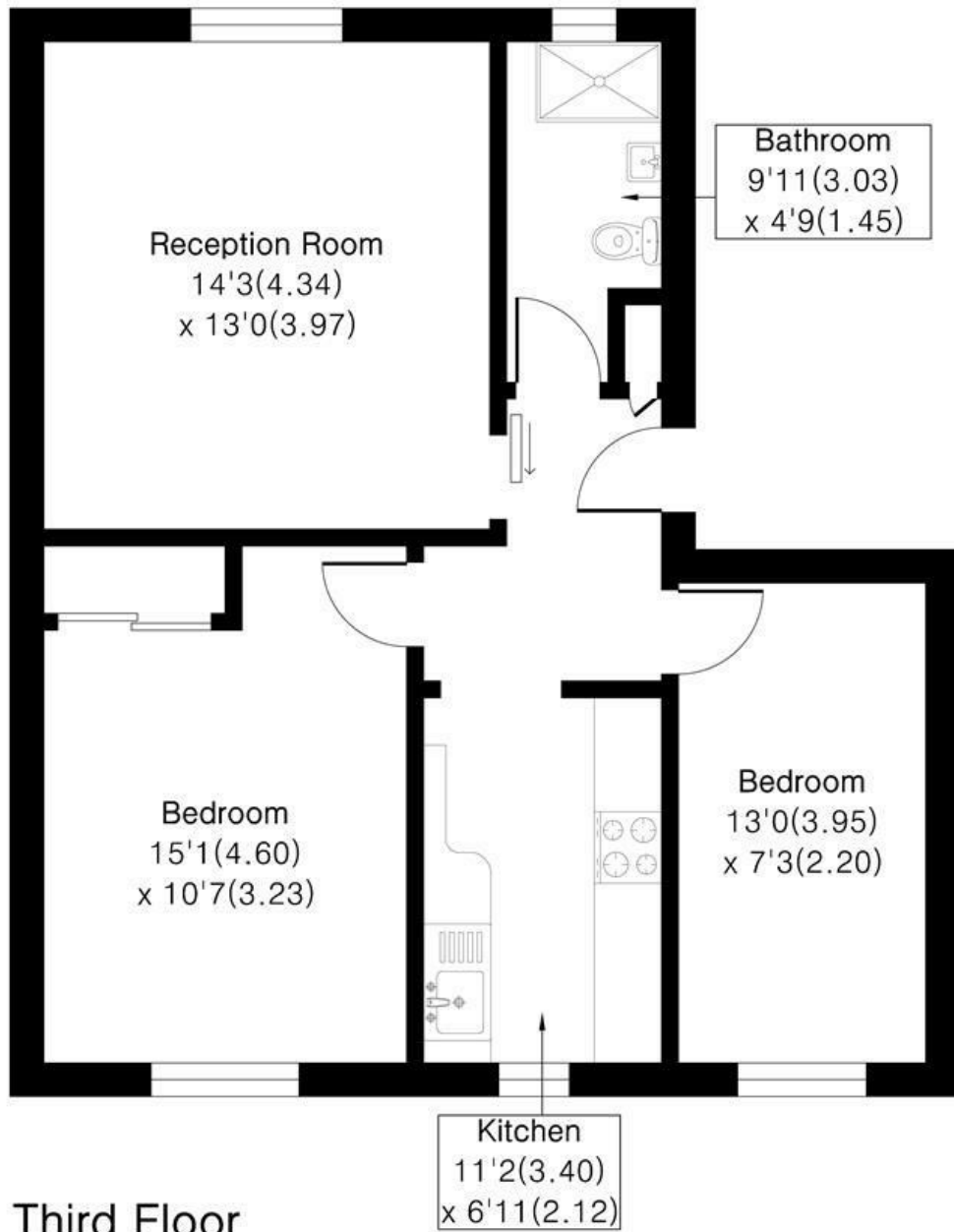
**£1,900 Per month**



# Blackheath Road, SE10 8PD

Approximate Area = 646 sq ft / 60.0 sq m

For identification only - Not To Scale



## Third Floor



Floor plan Produced in accordance with RICS Property Measurement 2nd Edition.  
Incorporating International Property Measurement Standards (IPMS2 Residential).  
Produced for Alex & Matteo Estate Agents.



Energy Efficiency Rating	
	Potential
Very energy efficient - lower running costs	
(92 plus) <b>A</b>	
(81-91) <b>B</b>	
(69-80) <b>C</b>	
(55-68) <b>D</b>	
(39-54) <b>E</b>	
(21-38) <b>F</b>	
(1-20) <b>G</b>	
Not energy efficient - higher running costs	
	<b>80</b>
	<b>60</b>

England & Wales EU Directive 2002/91/EC